

Making the most of Sparx Maths



Westfield School

Chorus Education Trust

Sparx Home Learning

Set:	Thursday 3pm
Complete by:	Tuesday 11pm

The library is available from 8am before school and after school until 3.30pm.

Your Home Learning is complete when you achieve 100%.

100% completion – 3 stamps!

If your Sparx is incomplete you will receive a correction and a lunchtime detention on Thursday.



Login method

Click on this button:

Log in to Sparx using Microsoft 

You can then log in using your normal school username with the suffix from your school email: “@westfield.chorustrust.org”

For example: 20jbloggs@westfield.chorustrust.org.

You do not need to remember a new password; you can just use your school password.

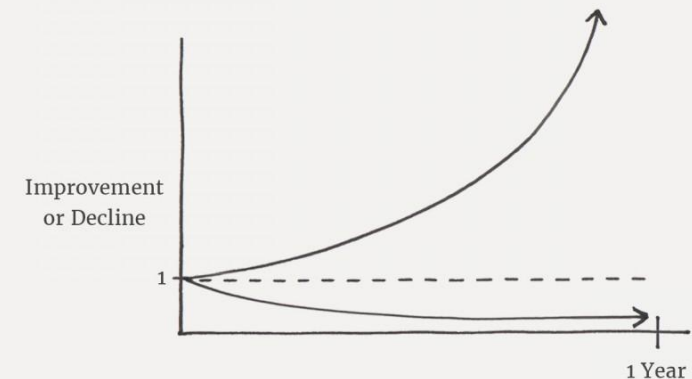


Why do we ensure that you complete Sparx Maths every week?

- Independent research carried out by Cambridge University found that regular completion of one hour of Sparx Maths for a whole school year improves GCSE Maths grades by nearly a third of a grade per year. That's around **one and a half grades** higher over your time at secondary school!
- Getting into good habits is an incredibly valuable skill to learn. Small improvements completed regularly over time will lead to **huge improvements** in the long run.

The Power of Tiny Gains

$$\begin{array}{ll} 1\% \text{ better every day} & 1.01^{365} = 37.78 \\ 1\% \text{ worse every day} & 0.99^{365} = 0.03 \end{array}$$



Why must you complete Sparx Maths homework to 100% ?

- Homework is personalised to **you**, so **you can succeed**.
- Sparx Maths keeps learning from your attempts to create challenging yet achievable problems each week.
- Because homework is made specifically for you, you will be able to answer every question correctly, but:
 - Some questions will take slightly longer than others
 - Some questions will probably need more than one try to get right



How to be successful at Sparx Maths

1. Start early
2. Watch the videos
3. Do the bookwork
4. Seek help
5. Achieve 100%



1. Start early

You've got a week, so **don't leave it until Tuesday night** – aim to get at least 50% done by the end of the weekend.

Your teacher will display the Hand-in Summary (on the next slide) at the start of every week and praise those that deserve it!

Aim for 50% by Monday



Hand-in Summary

Shout-Outs (13)

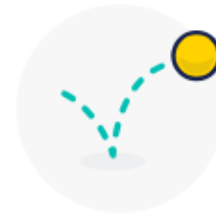
Earliest completion



These students completed their Compulsory Homework earliest this week:

Cedric Ng	7 days early
Ella Jones	6 days early
Nina Badcock	6 days early

Bouncing back



These students completed their Compulsory Homework after not finishing it last week:

Gwesyn Ropke
Aleena Ahmed
Matthew Fox
Abinan Kumarathas

Levelled up



These **3 students** moved up an XP Level in Week 36. Well done to them!

Jasmine Ayub	Level 1
Muhammad Ali	Level 1
Esme Lewis	Level 2

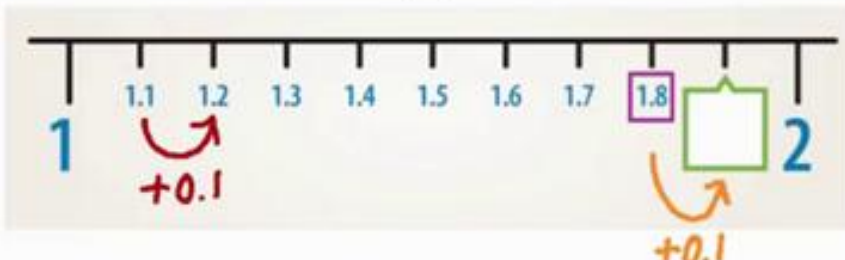
2. Watch the videos

Each question has its own video. They are short and explain how to do the question.

Also, if you watch the videos, the system will recognise that you found this question tricky, meaning the system will adjust accordingly.

Support video

What number should go in the box on the number line below?



Notice each division on the number line is equal to 0.1

Find the number to the left of the box

Add 0.1 to this number

$$\begin{array}{r} 1.8 \\ + 0.1 \\ \hline 1.9 \end{array}$$

1.9 ans

0:00 / 0:52

Close video X

3. Do the bookwork

You need to write down the bookwork codes and your answers. If you don't, you will not learn as well and you will get a low bookwork score. Your teacher will check this.

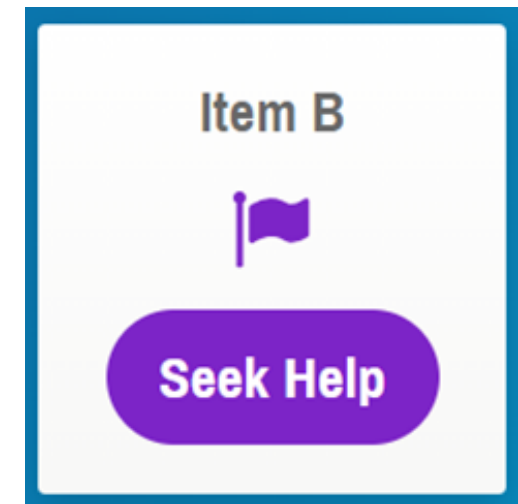
Showing workings is a fantastic habit for mathematicians to get into. Good mathematicians are good communicators, and they are systematic in their approach.

Homework		Thursday 1 st June 2017	
<u>Task 1</u>		<u>Task 2</u>	
D40	$12 + 13 = \underline{25}$ ✓	E41	$P(\text{yellow}) = \frac{3}{6}$ ✗
E50	$4 \times 3 + 2 \times 5 =$ $12 + 10 = \underline{22}$ ✓	F51	$P(\text{black}) = \frac{4}{8}$ $= \frac{1}{2}$ ✓
F60	$\begin{array}{r} 12 : 18 \\ \div 6 \\ \hline 2 : 3 \end{array}$ ✓	<u>Task 3</u>	
H70	$\frac{1}{14} + \frac{1}{7} = \frac{1}{\underline{21}}$ ✗	G61	All the marbles are green. The probability of choosing a purple marble is <u>impossible</u> ✓
J90	$\frac{1}{8} + \frac{1}{4} = \frac{1}{8} + \frac{2}{8}$ $= \frac{3}{8}$ ✓	H71	$P(\text{odd}) = \frac{3}{5}$ ✓
A01	$\begin{array}{r} + 493 \\ 162 \\ \hline 655 \end{array}$ ✓	<u>Task 3</u>	
B11	Area = 3×14 $\times 14$ $\begin{array}{r} 3 \\ \hline 42 \end{array}$ ✓	J22	Even ✓
C21	$\frac{1}{33} + \frac{1}{11} = \frac{1}{33} + \frac{3}{33}$ $= \frac{4}{33}$ ✓	K32	Unlikely ✗
D31	$3^2 = 3 \times 3$ $= \underline{9}$ ✓	L42	B, A, C ✓
		C03	4 none blue balls ✓
		D13	4 black, 2 red, 2 blue The probability of picking black is <u>evens</u> : Bag <u>B</u> ✓
		E23	<u>B</u> ✓

4. Seek help

If Sparx says “Seek Help”, then you need to come and get help! You need to answer these questions correctly for the homework to be completed.

Your teachers would love to help you, so jot down the problem, **before Tuesday**, and ask for help.



5. Achieve 100%

Everyone needs to get 100% by Wednesday. This means you need to finish all work before bedtime on Tuesday.

Get all the other parts right, get into this good habit, and over time you will notice the difference!

▶ Compulsory homework due Wednesday

Completed



Westfield School

Chorus Education Trust